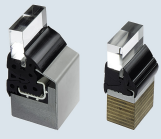


Rubber profiles and frames



We design and manufacture high-precision profiles. Our profiles with punched-out and cut-out sections, molded-on parts, in pressureless curing, shape-molded corners or integrated electrical connecting block are used in applications such as:

- Window pane sealing: as appealing clamping profiles for window frames, as profile frames for glass panes or hatch sealing
- Door and flap sealing: as single or multi-component sealing, as finger-protection profile with electrical connecting block
- Damping element or as elastic bearing to absorb damaging and disturbing vibrations



We manufacture rubber frames with in-molded corners that have a high resistance to shearing effects with the latest corner injection molding processes. In this way we achieve a clean transition between the extruded profile and the shape-molded corner - whether it is for radial, rectangular or endless connections. This special corner molding technology allows to also connect hollow chamber profiles and profiles with variable cross-sections.